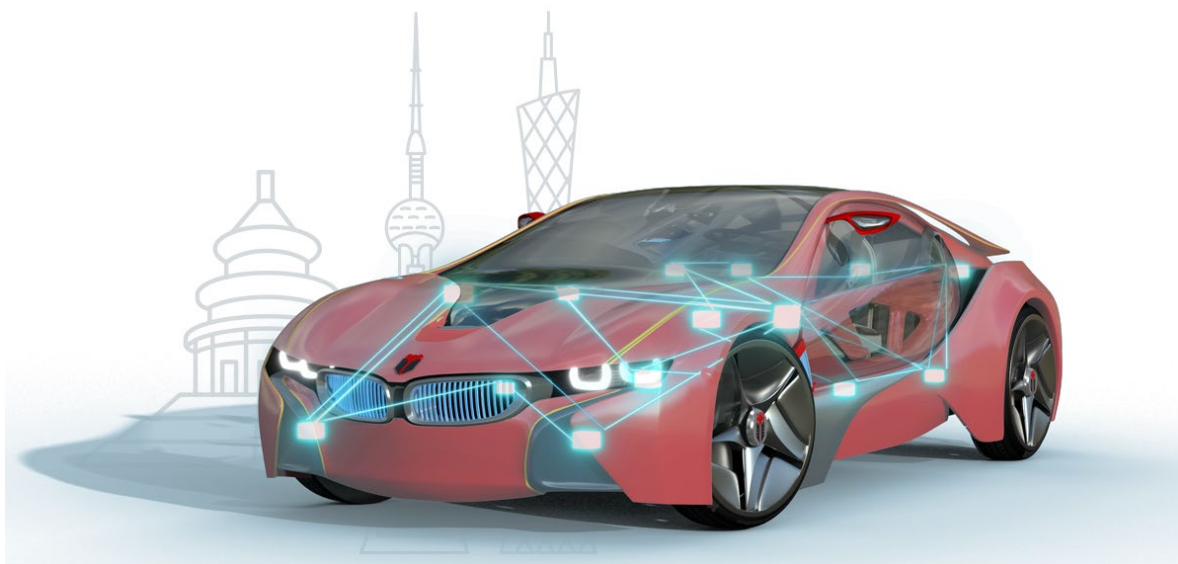




知从木牛 SAFETYLIBRARY 旗芯微 FC7300 产品手册
ZC.MUNIU SAFETYFRAME PRODUCT MANUAL
BASED ON FLAGCHIP FC7300
知从木牛基础软件平台功能安全库
ZC.MuNiu Basic Software Platform Safety Library



知从木牛 SAFETYLIBRARY 旗芯微 FC7300 产品手册

ZC.MUNIU SAFETYFRAME PRODUCT

MANUAL BASED ON FLAGCHIP FC7300

知从木牛基础软件平台功能安全库

ZC.MuNiu Basic Software Platform Safety Library

1 功能概述 FUNCTIONAL OVERVIEW

FC7300 Safety Library 用于帮助客户实现基于 FlagChip FC7300 平台的功能安全要求。Safety Library 具有高扩展性，可以根据不同的客户项目要求进行配置和再开发，最终满足客户的功能安全需求。

The FC7300 Safety Library is designed to assist customers in achieving functional safety requirements based on the FC7300 platform. The Safety Library is highly scalable and can be configured and redeveloped according to different customer project requirements, ultimately meeting the customers' functional safety requirements.

FC7300 Safety Library 用于实现 FC7300 系列的软件安全机制，包括 MCU 内部模块的测试和硬件安全机制的驱动。

The FC7300 Safety Library is used to implement the software safety mechanisms of the FC7300, including the testing of internal MCU modules and the driving of hardware safety mechanisms.

2 应用领域 APPLICATION FIELD

FC7300 Safety Library 可应用于有功能安全等级需求的控制器。例如：

The FC7300 Safety Library can be applied to controllers that require functional safety levels.

For example:

- 电池管理系统(BMS)
Battery Management System
- 智能驾驶控制器(ADAS)
Advanced Driver Assistance System
- 智能网关控制器(Gateway)
Intelligent Gateway Controller
- 智能刹车系统(iBooster)
Intelligent Braking System
- 车身稳定控制(ESC/Onebox)
Vehicle Stability Control
- 电动助力转向(EPS)
Electric Power Steering
- 车身控制器(BCM)
Body Control Module
- 发动机管理系统(EMS)
Engine Management System
- 底盘域线控系统应用
Chassis Domain Line Control System Applications

通过将 Safety Library 集成到基于 FC7300 的控制器中，可达到 ISO26262 ASIL-D 的等级要求。

By integrating the Safety Library into the control based on FC7300, it is possible to meet the ISO 26262 ASIL-D level requirements.

3 配置环境 CONFIGURATION ENVIRONMENT

配置环境 Configuration Environment	
Hardware (Chip)	FLAGCHIP FC7300F8MDT
Compilers Supported	IAR v8.22
Evaluation Hardware	FC7300 Demoboard
Debugger	Lauterbach (Trace32 R.2018.02) Isystem (IC5700)
Configuration Tools	ZCMuNiu v4.4.0
Configuration Environment	Win10 64bit

4 开发背景 DEVELOPMENT BACKGROUND

目前，汽车上的电子电气架构越来越复杂，对汽车电子的安全性要求也越来越高，为了满足汽车的安全性需求，汽车功能安全越来越受到重视。提到功能安全，大家首先想到的是功能安全标准 ISO26262。其中，ISO 26262-5(2018) Clause 8 中介绍了 2 个度量：Single-point fault metric(单点故障度量)和 Latent-fault metric(潜伏故障度量)。根据不同的 ASIL 等级要求，单点故障度量和潜伏故障度量需要达到相应的等级。

Currently, the electronic and electrical architecture of automobiles is becoming increasingly complex, and the safety requirements for automotive electronics are also rising. To meet the safety requirements of automobiles, functional safety is gaining more attention. When it comes to functional safety, the first thing that comes to mind is the functional safety standard ISO 26262. In particular, ISO 26262-5(2018) Clause 8 introduces two metrics: Single-point fault metric (single-point fault metric) and Latent-fault metric (latent fault metric). Depending on the required ASIL level, the single-point fault metric and latent fault metric must meet the corresponding levels.

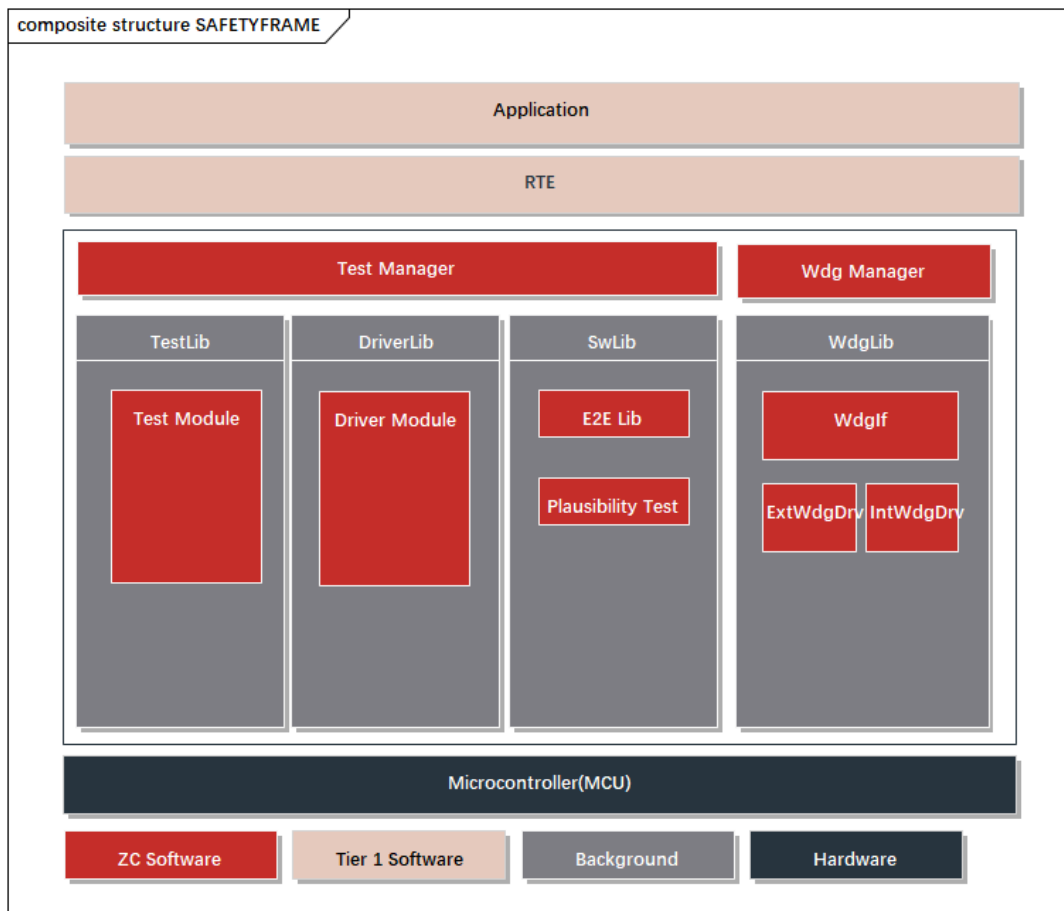
对于微控制器(MCU，以下简称 MCU)，在电子电气系统中，作为 SEooC(safety element out of context)进行设计开发。MCU 为了满足以上提到的 2 个度量要求，需要实现相应的安全机制。而安全机制可以分配到硬件和软件模块中。MCU 的 Safety Frame 安全库就是实现分配到软件上的安全机制。

For microcontrollers (MCU, referred to as MCU below), within the electronic and electrical system, they are designed and developed as SEooC (safety element out of context). To meet the aforementioned metric requirements, MCUs need to implement corresponding safety mechanisms. These safety mechanisms can be allocated to both hardware and software modules. The Safety Frame safety library for MCUs is the implementation of safety mechanisms allocated to software.

ASIL	SPFM	LFM	PMHF
A	Not Relevant	Not Relevant	Not Relevant
B	$\geq 90\%$	$\geq 60\%$	$< 10^{-7}/\text{hour}$
C	$\geq 97\%$	$\geq 80\%$	$< 10^{-7}/\text{hour}$
D	$\geq 99\%$	$\geq 90\%$	$< 10^{-8}/\text{hour}$

5 功能描述 FUNCTIONAL DESCRIPTION

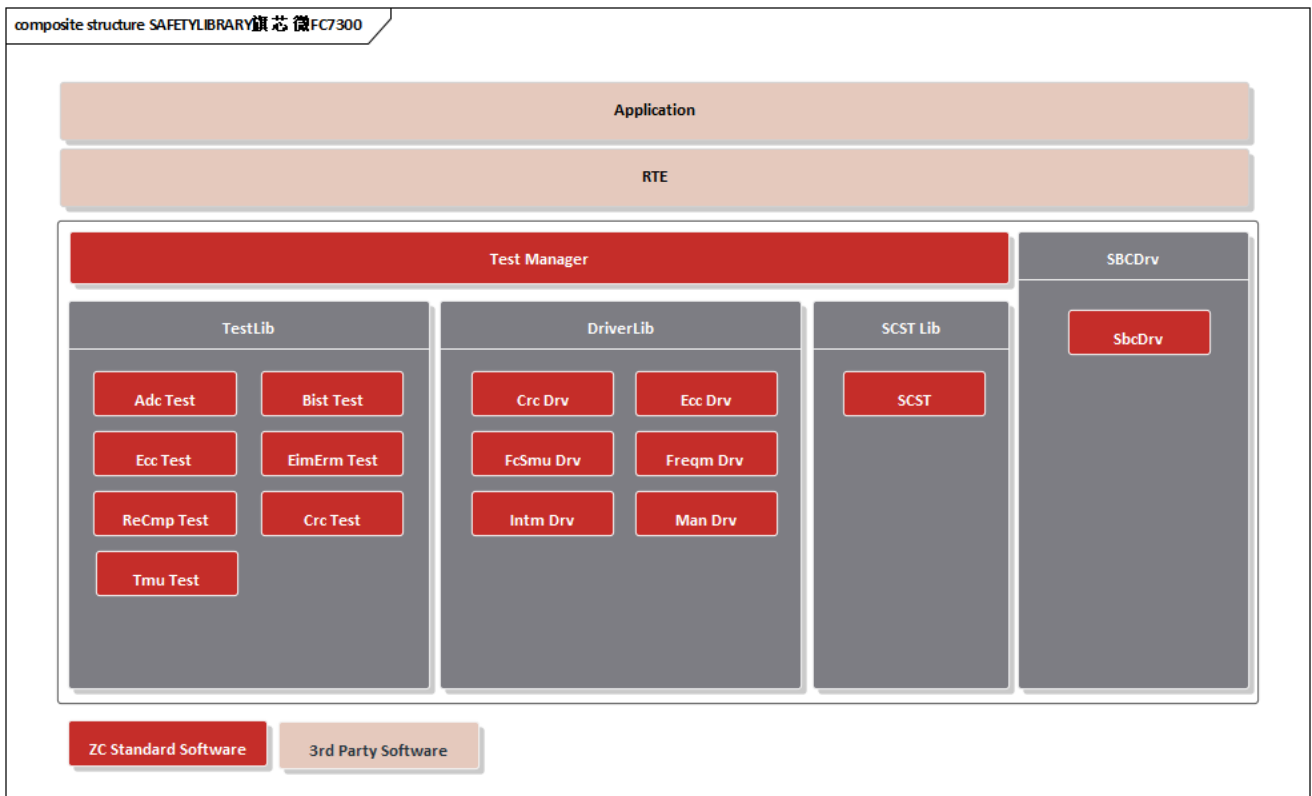
5.1 产品特点 Product Feature



- 可作为复杂驱动集成到 AUTOSAR 中
Can be integrated as a complex driver into AUTOSAR .
- 可集成到非 AUTOSAR 软件架构中，灵活适配
Can be integrated into non-AUTOSAR software architectures.
- 支持多核测试及应用
Support multi-core testing and applications.
- Safety Library 具有内部程序流监控
Safety Frame has internal program flow monitoring.
- 高安全性：支持多核自检测测试，搭配知从科技 TLF35584Lib 可实现高达 ASIL-D 需求
High security: Supports multi-core self-testing, and can achieve up to ASIL-D requirements when paired with ZC 's TLF35584Lib.
- 高扩展性：各模块可配置满足不同客户的应用需求

High scalability: Each module can be configured to meet the application requirements of different customers.

5.2 软件架构 Software Architecture



软件架构
software architecture

实现的功能模块：

Realized functional modules:

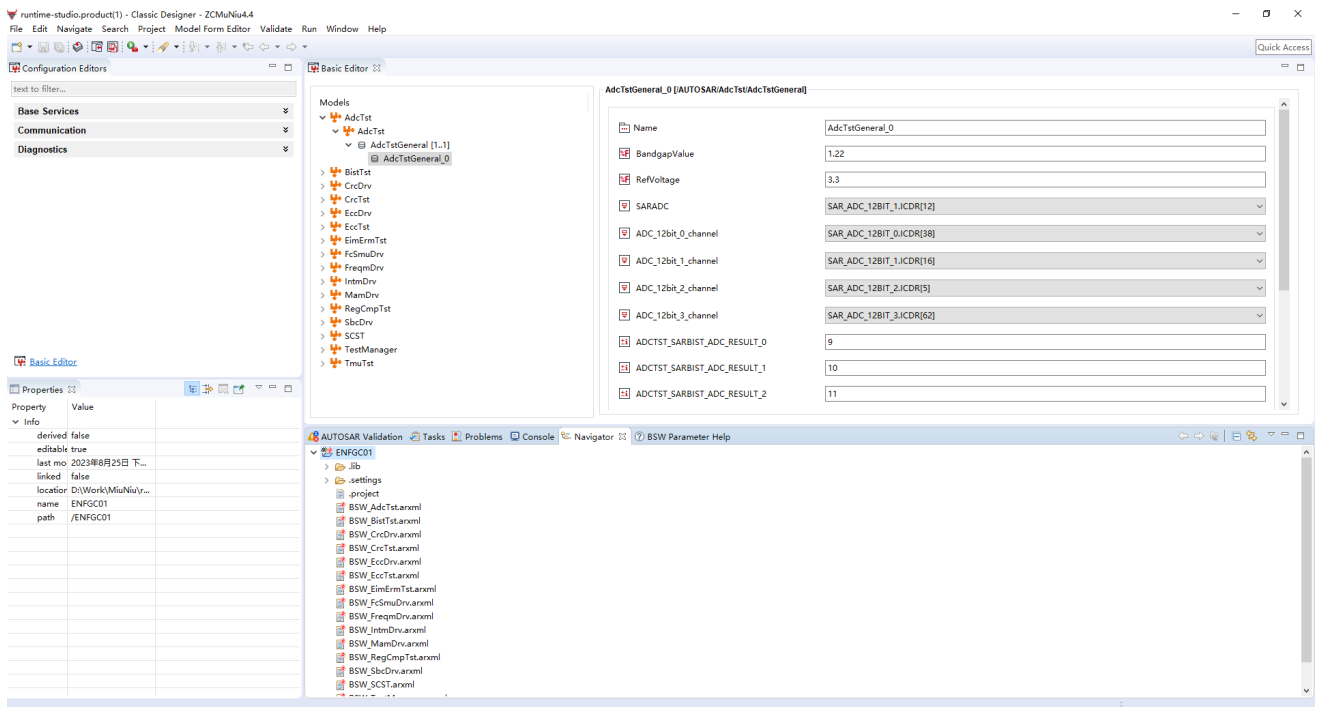
模块 Module	子模块 Sub-module	描述 Description
测试库 Test Library	Adc Test	PMC电压监控功能 PMC Voltage Monitoring Function
	Bist Test	Logic & Memory BIST配置和结果检测 Logic & Memory BIST Configuration and Result Detection
	Crc Test	CRC Checker数据检测 CRC Checker Data Detection
	Ecc Test	ECC Checker数据检测 ECC Checker Data Detection
	EimErm Test	故障注入及故障状态检测 Fault Injection and Fault Status Detection
	RegCmp Test	寄存器周期检测 Register Periodic Detection
	Tmu Test	ADC采样值监控检测 ADC Sampling Value Monitoring and Detection
驱动库 Driver Library	Crc Driver	CRC Checker数据检测配置驱动 CRC Checker Data Detection Configuration Driver
	Ecc Driver	ECC Checker数据检测配置驱动 ECC Checker Data Detection Configuration Driver
	FcSmu Driver	故障状态检测配置驱动 Fault State Detection Configuration Driver
	Freqm Driver	时钟监控功能配置驱动 Clock Monitoring Function Configuration Driver
	Intm Driver	中断监控配置驱动 Interrupt Monitoring Configuration Driver
	Mam Driver	MAN端口访问监控配置驱动 MAN Port Access Monitoring Configuration Driver
SCST Lib	SCST	CM7内核自检 CM7 Kernel Self-Check
Wdg 驱动库 Wdg Driver Library	SBCDrv	SBC芯片驱动 SBC Chip Driver
Test Manager	Test Manager	测试管理模块 Test Management Module

满足的 FC7300 Safety Manual 中的 ESM:

SM1.ADC.PWR_CHK
SM3.SBC
SM1.PMC_MON
SM1.SCG.CRC
SM3.CLOCK_JITTER
SM1.FC.ECC
SM1.FC.ECC_MON
SM1.EIM.Flash
SM1.ERM.Flash
SM1.FC.PGMON
SM1.Flash_IFR.RDT
SM1.ROM.ECC
SM1.EIM.ROM
SM1.ERM.ROM
SM1.EIM.SYSRAM
SM1.ERM.SYSRAM
SM1.CM7.LOCKSTEP_MON_RDT
SM1.EIM.LOCKSTEP
SM1.ITCM.ECC
SM1.EIM.ITCM
SM1.ERM.ITCM
SM1.DTCM.ECC
SM1.EIM.DTCM
SM1.ERM.DTCM
SM1.CM7.CACHE_ECC
SM1.EIM.CACHE
SM1.ERM.CACHE
SM2.CM7.SELFTEST
SM1.MAM.EDC
SM1.MAM.RDT
SM1.EIM.MAM
SM1.MAM.WDOG
SM1.MAM.MPU
SM1.FMC.EDC
SM1.EIM.FMC
SM4.CPM.SWCHK
SM4.MB.SWCHK
SM1.INTM
SM1.TMU.ADC
SM1.TMU.CMP
SM1.SCM.CRC
SM1.ISM
SM3.EXT_WDOG
SM1.FCSMU
SM1.FCSMU.MON
SM1.FCSMU.CRC
SM3.FCSMU_MON
SM1.STCU
SM1.STCU.WDOG

SM1.DMA_CFG.ECC
SM1.EIM.DMA
SM1.ERM.DMA
SM1.DMA.MON
SM1.FCSPi.MON
SM1.FCUART.MON
SM1.FlexCAN.ECC
SM1.EIM.FlexCAN
SM1.ERM.FlexCAN
SM1.ERM.ENET
SM1.ADC_SelfTest
SM1.FREQM
SM4.PMC.SWCHECK
SM4.SCG.SWCHECK
SM4.CMU.SWCHECK
SM4.PCC.SWCHECK
SM4.MAM.SWCHECK
SM4.CM7.MPU_SWCHECK
SM1.FMC.ENC
SM1.ERM.FMC
SM4.FMC.SWCHECK
SM4.WDG.SWCHECK
SM4.INTM.SWCHECK
SM4.ISM.SWCHECK
SM4.RGM.SWCHECK
SM4.DMA.SWCHECK
SM4.FCPIT.SWCHECK
SM4.ADC.SWCHECK
SM4.COMM_SAFEPROT
SM1.ERM.ENET
SM1.ADC_SelfTest
SM1.FREQM
SM4.PMC.SWCHECK
SM4.SCG.SWCHECK
SM4.CMU.SWCHECK
SM4.PCC.SWCHECK
SM4.MAM.SWCHECK
SM4.CM7.MPU_SWCHECK
SM1.FMC.ENC
SM1.ERM.FMC
SM4.FMC.SWCHECK
SM4.CRC_SWCHECK

5.3 配置工具 Configuration Tool



为了满足客户的不同项目需求，提高 Safety Library 的扩展性，FC7300 Safety Library 实现了各个模块可配置性，并且实现了 Safety Library 的配置工具。客户可根据不同需求，在配置工具上完成 Safety Library 各个模块的配置工作，可生成配置代码文件，将生成的配置文件集成到工程中即可。

To meet the diverse project requirements of customers and enhance the scalability of the Safety Library, the FC7300 Safety Library has implemented the configurability of each module and has developed a configuration tool for the Safety Library. Customers can complete the configuration of various modules of the Safety Library using the configuration tool according to different needs. They can generate configuration code files, and integrate the generated configuration files into the project.

6 过程文档 PROCESS DOCUMENTATION

开发流程 Development Process	文档描述 Document Description
需求收集 Requirement Collection	客户的需求文档 Customer Requirements Document
软件需求分析 Software Requirement Analysis	软件的需求分析 Software Requirements Analysis
	需求分析规格书 Requirements Analysis Specification
	软件需求追踪表 Software Requirements Traceability Matrix
	客户的问题沟通表 Customer Issue Communication Form
软件架构设计 Software Architecture Design	软件架构说明书 Software Architecture Specification
	软件架构的追踪表 Software Architecture Traceability Matrix
软件详细设计和 单元设计 Detailed Software Design and Unit Design	软件模块详细设计说明书 Software Module Detailed Design Document
	配置工具设计 Configuration Tool Design
	软件详细设计追踪表 Software Detailed Design Traceability Matrix
	Safety Library 工程评审 SafetyLib Engineering Review
软件单元测试 Software Unit Testing	QAC 分析报告 QAC Analysis Report
	软件单元验证策略 Software Unit Verification Strategy
	软件单元验证策略 Software Unit Verification Strategy
	集成策略 Integration Strategy
软件集成和集成 测试	集成手册 pdf Integration Manual (PDF)

开发流程 Development Process	文档描述 Document Description
Software Integration and Integration Testing	集成测试策略 Integration Test Strategy
	集成测试报告 Integration Test Report
	资源分析报告 Resource Analysis Report
	木牛.SafetyLibrary 配置工具使用指导书 MuNiu.SafetyLibrary Configuration Tool User Guide
	木牛.SafetyLibrary 配置工具软件配置管理文档 MuNiu.SafetyLibrary Configuration Tool Software Configuration Management Document
软件认可测试 Software Qualification Testing	软件测试报告 Software Test Report
	软件测试策略 Software Test Strategy
发布 Release	发布文档 Release documentation

7 功能安全 FUNCTIONAL SAFETY

7.1 功能安全评估报告 Functional Safety Assessment Report

7.2 功能安全证书 Functional Safety Certificate

 		<p>CERTIFICATE NO FS/71/220/23/1031 PAGE 1/1</p> <p><small>ZERTIFIKAT NR. SEITE(N)</small></p>	
<p>LICENCE HOLDER & MANUFACTURER <small>GENEHMIGUNGSIHABER & HERSTELLER</small></p> <p>Shanghai ZC Technology Co., Ltd. Building C, 888 Huanhu West 2nd Road, Pudong New Area, Shanghai, P.R. China</p>			
<p>PROJECT NO./ID <small>PROJEKT-NR./ID</small></p> <p>T4A8-AU01</p>	<p>LICENSED TEST MARK <small>GENEHMIGTES PRÜFZEICHEN</small></p> 	<p>CERT. REPORT NO. <small>ZERTIFIKATSBERICHT NR.</small></p> <p>T4A80002 is an integral part of this certificate. <small>Ist ein integraler Bestandteil dieses Zertifikats.</small></p>	
<p>Certified product(s) <small>Zertifizierte(s) Produkt(e)</small></p> <p>SafetyFrame Version 2.1.0</p>			
<p>Tested according to <small>Gepprüft nach</small></p> <p>ISO 26262-2:2018 ISO 26262-6:2018 ISO 26262-8:2018 ISO 26262-9:2018</p>			
<p>Technical Data and Parameter <small>Technische Daten und Parameter</small></p>	<p>The judgement of the achieved functional safety for the above-mentioned SafetyFrame Software is "accepted" according to above mentioned standards ASIL D requirements.</p> <p>The SafetyFrame Software is suitable for integration into systems up to ASIL D.</p>		
<p><small>The certificate is based on voluntary tests. The compliance of the certified product against the requirements of above listed functional safety standards was evaluated. Any changes to the design, components or processing may require repetition of some parts of the certification to retain the certification. All applicable requirements of the testing and certification regulations of SGS-TÜV Saar GmbH have to be complied, see www.sgs-tuv-saar.com/tcr-muc and www.sgs-tuv-saar.com/gtc-muc.</small></p>			
<p>Certification Body for Functional Safety & Cyber Security SGS-TÜV Saar GmbH <small>Zertifizierungsstelle für Funktionale Sicherheit & Cyber Sicherheit</small></p>			<p>Munich, Feb 22, 2023</p>  <p>Gudrun Neumann</p>
<p>Reference to SGS Certification Database</p> 		<p>SGS-TÜV Saar GmbH, Hofmannstr. 50, 81379 München, Deutschland / Germany Website: www.sgs-tuv-saar.com E-Mail: fs@sgs.com</p>	

8 证书 CERTIFICATE

中华人民共和国国家版权局
计算机软件著作权登记证书

证书号： 软著登字第4226054号

软件名称： 知从安全库软件
[简称： 知从SafetyLib]
V1.0

著作权人： 上海知从科技有限公司

开发完成日期： 2019年05月31日

首次发表日期： 未发表

权利取得方式： 原始取得

权利范围： 全部权利

登记号： 2019SR0805297

根据《计算机软件保护条例》和《计算机软件著作权登记办法》的规定，经中国版权保护中心审核，对以上事项予以登记。



No. 04322276


中华人民共和国国家版权局
计算机软件著作权
登记专用章
2019年08月02日

木牛软件著作权登记证书
ZC.MUNIUI SOFTWARE COPYRIGHT REGISTRATION CERTIFICATE



木牛软件产品登记证书
ZC. MUNIU SOFTWARE PRODUCT REGISTRATION CERTIFICATE



公众号



业务联系

成为全球领先的**汽车基础软件**公司
To Be the Global Leading **Automotive Basic Software** Company

